

24 19
25 30

PLAT OF BOCA RANCHO

BEING A REPLAT OF A PORTION OF TRACT 15, BLOCK 31, PALM BEACH FARMS CO., PLAT NO. 3, RECORDED IN P.B. 2, PG. 53
IN SECTION 30, TOWNSHIP 47 SOUTH, RANGE 42 EAST
PALM BEACH COUNTY, FLORIDA

176

STATE OF FLORIDA }
COUNTY OF PALM BEACH }
This Plat was filed for record at _____ M.
this _____ day of _____
19 _____, and duly recorded in Plat Book No. _____
on page _____
JOHN B. DUNKLE, Clerk Circuit Court
By _____, D. C.

PALM BEACH FARMS COMPANY
PLAT NO. 3 P.B. 2, PG. 53

PORTION OF THE NORTH BOUNDARY OF
TRACT 15, PALM BEACH FARMS CO. PLAT
NO. 3 P.B. 2, PG. 53

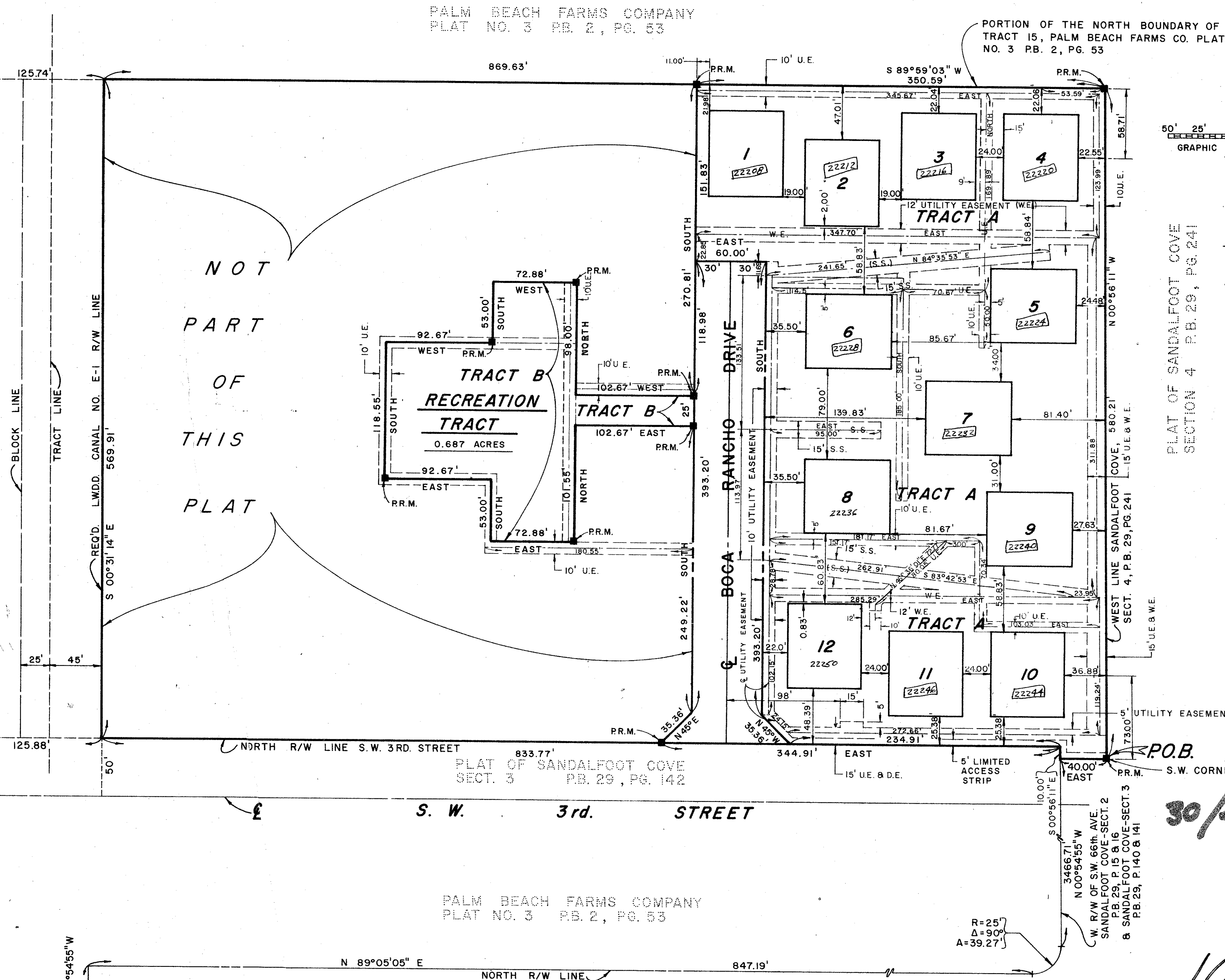
(U. S. NO. 441)

S. R. NO. 7

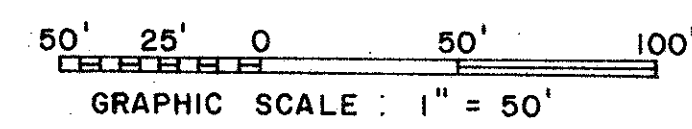
RANGE LINE

4062.84'

25 30
36 31



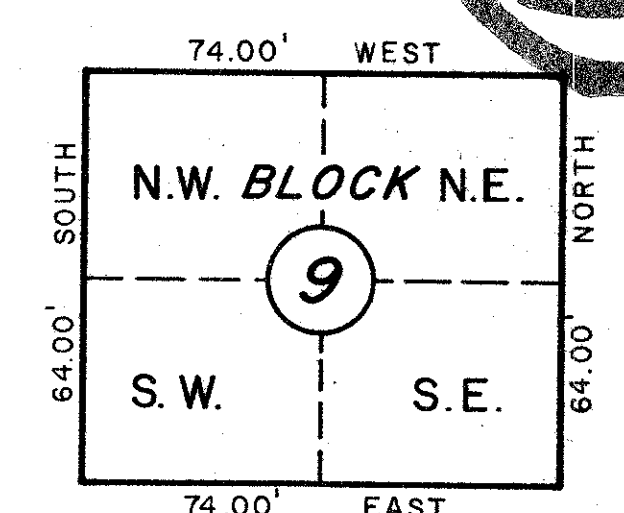
NOT
PART
OF
THIS
PLAT



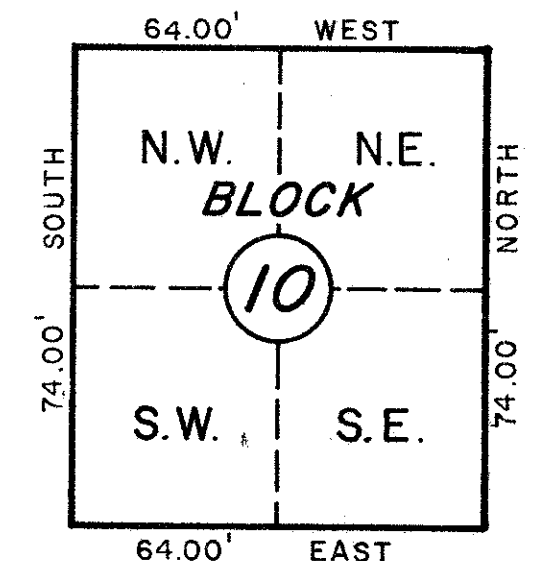
SURVEYOR'S NOTES:
1. TIES TO THE BLOCKS ARE AT 90° ANGLES TO THE BOUNDARIES AND DISTANCES ARE MEASURED AT RIGHT ANGLES.
2. BEARING DATUM: THE NORTH R/W LINE OF S.W. 3rd STREET IS ASSUMED TO BEAR WEST AND ALL BEARINGS SHOWN ARE RELATIVE THERETO.

LEGEND:
S.S. INDICATES SANITARY SEWER EASEMENT
W.E. INDICATES WATER EASEMENT
D.E. INDICATES DRAINAGE EASEMENT
U.E. INDICATES UTILITY EASEMENT (F.P.B. 100, PG. 50)

54



TYPICAL DETAIL FOR BLOCKS 5, 6, 7, 8, 9



TYPICAL DETAIL FOR BLOCKS 1, 2, 3, 4, 10, 11, 12

30/47/42

1000

P.O.C. (DESCRIPTION) S.W. 14th ST. SANDALFOOT COVE SECTION ONE P.B. 28, PGS. 225 & 226

PLAT OF SANDALFOOT COVE SECT. 3 P.B. 29, PG. 142

PALM BEACH FARMS COMPANY PLAT NO. 3 P.B. 2, PG. 53

THIS INSTRUMENT WAS PREPARED BY RAFAEL SALADRIGAS IN THE OFFICE OF

FLORIDA SURVEYING & MAPPING, INC.
REGISTERED LAND SURVEYORS
WEST PALM BEACH FLORIDA 33401

ROSSI AND MALAVASI
ENGINEERS, INC.
WEST PALM BEACH, FLORIDA

PLAT OF BOCA RANCHO
PALM BEACH COUNTY, FLORIDA
IN 2 SHEETS SHEET NO. 2

Date MAY, 1977
Designed
Drawn F. McELROY
Checked
Scale 1" = 50'
No. 35012-4
2 of 2

BOCA RANCHO - PLAT #1